

Introduction

The frequency of waveguide to coaxial adapters designed and produced by Elite Electronic covers 5.4GHz-110GHz.

It has the characteristics of high reliability, small size and excellent performance, and is widely used in microwave measurement and millimeter wave equipment.

The waveguide ports include standard rectangular and double-ridged waveguide ports, and non-standard waveguide ports can also be customized according to user needs.

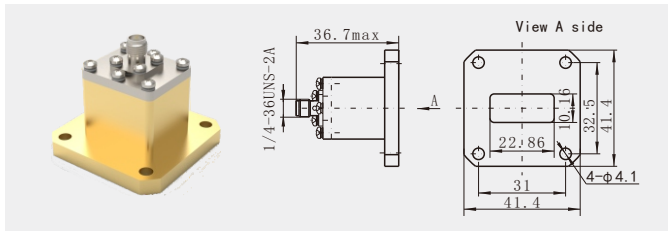
The coaxial end connection interface includes N, TNC, SMA, SMP, 3.5mm, K(2.92mm), 2.4mm, 1.85mm, 1.0mm and micro-strip type.

Waveguide to coaxial adapters are divided into two types: end launch and right angle type in terms of structure. Among them, the coaxial waveguide converter with right angle structure can also be used as a high-power structure.



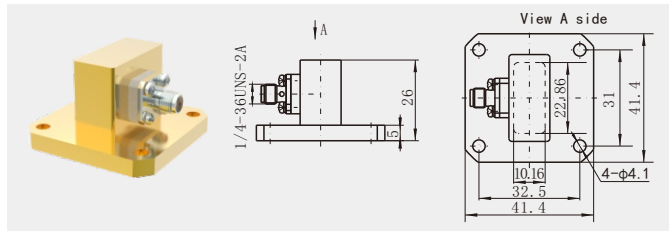
SMA Series

SMA/BJ100-KFE2



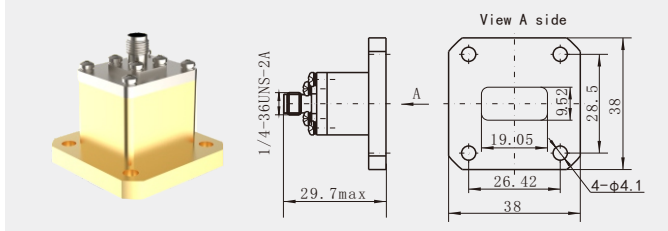
Model No.	SMA/BJ100-KFE2
Waveguide Size	BJ100 (WR90)
Frequency Range	8.2GHz~12.5GHz
VSWR	≤1.25
Insertion Loss	≤0.2dB
Body Geometry	End Launch

SMA/BJ100-KF6



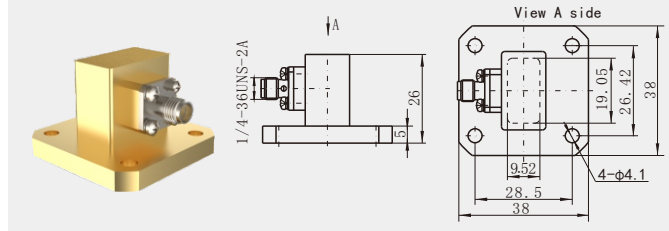
Model No.	SMA/BJ100-KF6
Waveguide Size	BJ100 (WR90)
Frequency Range	8.2GHz~12.5GHz
VSWR	≤1.25
Insertion Loss	≤0.2dB
Body Geometry	Right Angle

SMA/BJ120-KFE



Model No.	SMA/BJ120-KFE
Waveguide Size	BJ120 (WR75)
Frequency Range	9.84GHz~15GHz
VSWR	≤1.25
Insertion Loss	≤0.2dB
Body Geometry	End Launch

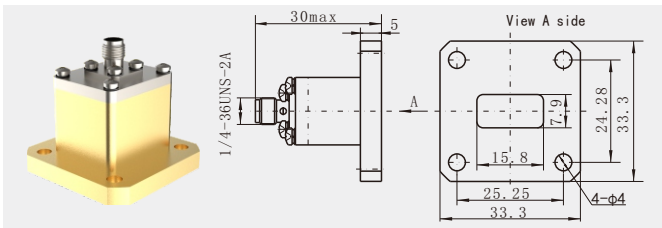
SMA/BJ120-KF6



Model No.	SMA/BJ120-KF6
Waveguide Size	BJ120 (WR75)
Frequency Range	9.84GHz~15GHz
VSWR	≤1.25
Insertion Loss	≤0.2dB
Body Geometry	Right Angle

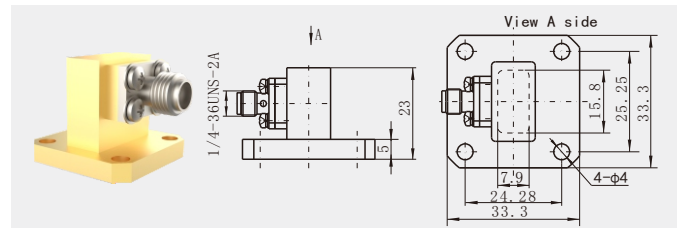
SMA Series

SMA/BJ140-KFE



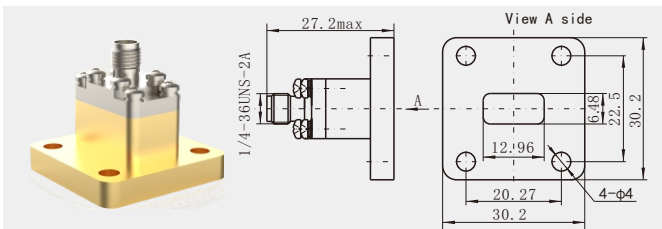
Model No.	SMA/BJ140-KFE
Waveguide Size	BJ140 (WR62)
Frequency Range	11.9GHz~18GHz
VSWR	≤1.25
Insertion Loss	≤0.2dB
Body Geometry	End Launch

SMA/BJ140-KF15



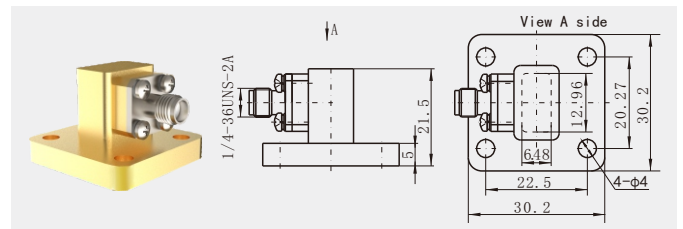
Model No.	SMA/BJ140-KF15
Waveguide Size	BJ140 (WR62)
Frequency Range	11.9GHz~18GHz
VSWR	≤1.2
Insertion Loss	≤0.2dB
Body Geometry	Right Angle

SMA/BJ180-KFE5



Model No.	SMA/BJ180-KFE5
Waveguide Size	BJ180 (WR51)
Frequency Range	14.5GHz~22GHz
VSWR	≤1.25
Insertion Loss	≤0.2dB
Body Geometry	End Launch

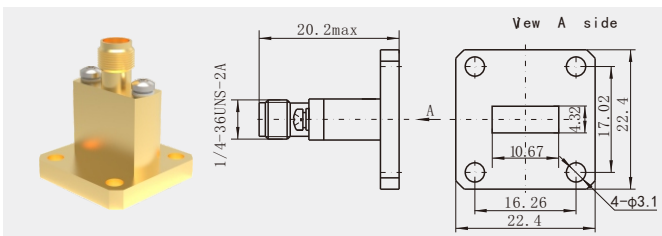
SMA/BJ180-KF2



Model No.	SMA/BJ180-KF2
Waveguide Size	BJ180 (WR51)
Frequency Range	14.5GHz~22GHz
VSWR	≤1.25
Insertion Loss	≤0.2dB
Body Geometry	Right Angle

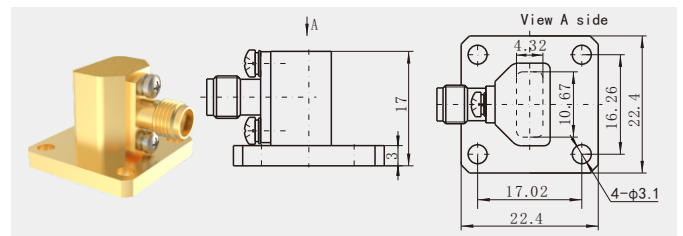
K Series

K/BJ220-KFE7



Model No.	K/BJ220-KFE7
Waveguide Size	BJ220 (WR42)
Frequency Range	17.6GHz~26.7GHz
VSWR	≤1.3
Insertion Loss	≤0.3dB
Body Geometry	End Launch

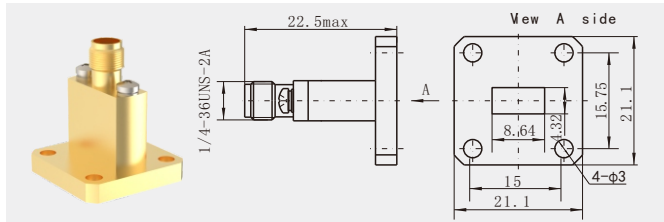
K/BJ220-KF6



Model No.	K/BJ220-KF6
Waveguide Size	BJ220 (WR42)
Frequency Range	17.6GHz~26.7GHz
VSWR	≤1.25
Insertion Loss	≤0.3dB
Body Geometry	Right Angle

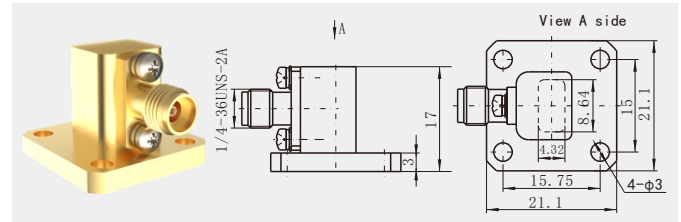
K Series

K/BJ260-KFE5



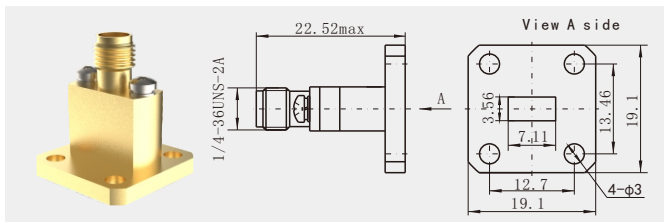
Model No.	K/BJ260-KFE5
Waveguide Size	BJ260 (WR34)
Frequency Range	21.7GHz~33GHz
VSWR	≤1.3
Insertion Loss	≤0.35dB
Body Geometry	End Launch

K/BJ260-KF8



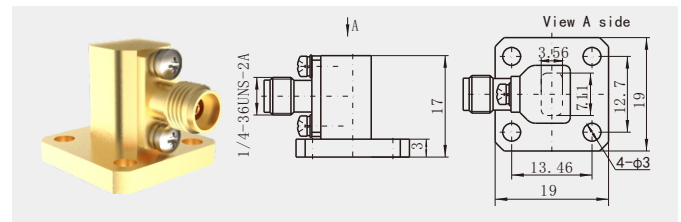
Model No.	K/BJ260-KF8
Waveguide Size	BJ260 (WR34)
Frequency Range	21.7GHz~33GHz
VSWR	≤1.25
Insertion Loss	≤0.35dB
Body Geometry	Right Angle

K/BJ320-KFE9



Model No.	K/BJ320-KFE9
Waveguide Size	BJ320 (WR28)
Frequency Range	26.4GHz~40GHz
VSWR	≤1.3
Insertion Loss	≤0.35dB
Body Geometry	End Launch

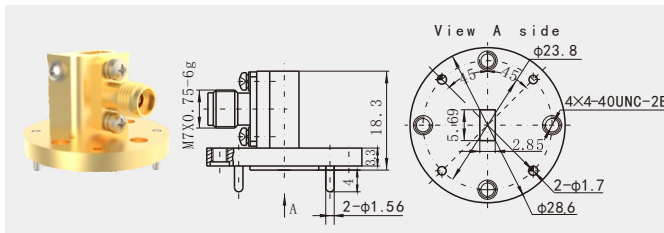
K/BJ320-KF22



Model No.	K/BJ320-KF22
Waveguide Size	BJ320 (WR28)
Frequency Range	26.4GHz~40GHz
VSWR	≤1.25
Insertion Loss	≤0.35dB
Body Geometry	Right Angle

2.4 Series

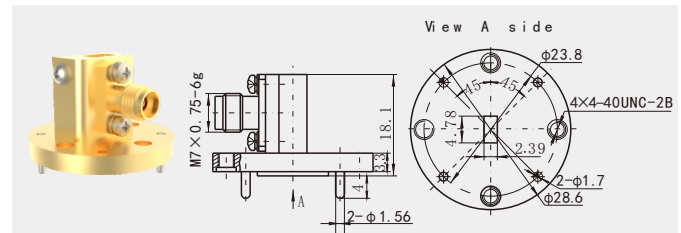
2.4/BJ400-KF4



Model No.	2.4/BJ400-KF4
Waveguide Size	BJ400 (WR22)
Frequency Range	32.9GHz~50GHz
VSWR	≤1.35
Insertion Loss	≤0.45dB
Body Geometry	Right Angle

1.85 Series

1.85/BJ500-KF4



Model No.	1.85/BJ500-KF4
Waveguide Size	BJ500 (WR18)
Frequency Range	39.2GHz~59.6GHz
VSWR	≤1.4
Insertion Loss	≤0.45dB
Body Geometry	Right Angle